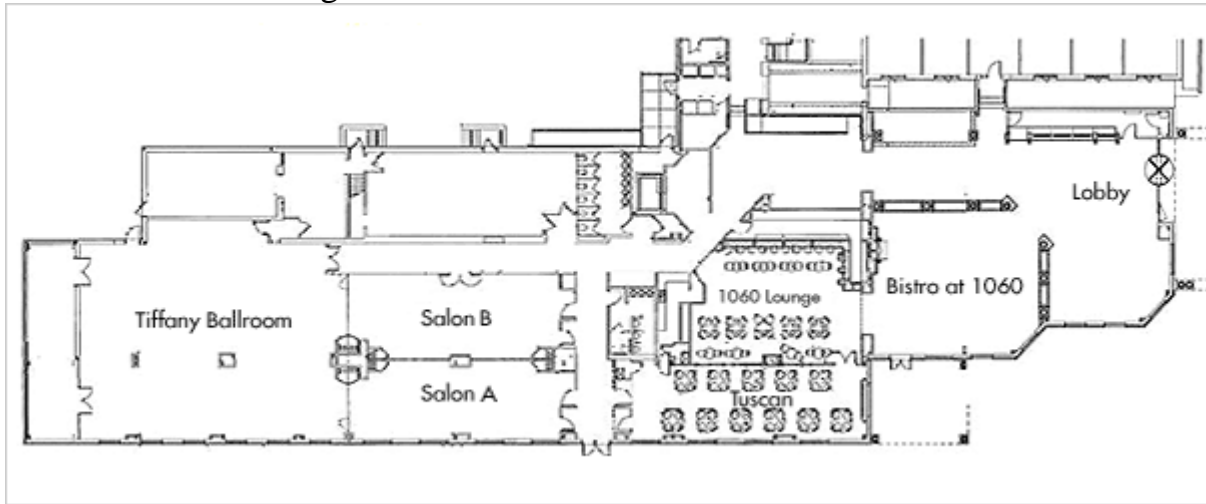


# VISUAL TECHNOLOGIES CORPORATION

## The Genesee Building



Room Names	Dimensions (L x W x H)	Square Footage	Theater Set Up	Banquets Set Up	Classroom Set Up	Reception Set Up
Tiffany	63' x 43' x 12	2,709	300	200	166	350
Salon A	50 x 17 x 8'9	850	70	50	20	75
Salon B	50 x 18 x 8'9	900	80	50	35	75
Salon A & B	50 x 35 x 8'9	1,750	160	100	70	150
Tiffany Ballroom	113 x 43 x 12'	4,459		280		500
Capital Club (not pictured)	52' x 17' x 8	884	N/A	40	N/A	40

Sales • Rentals • Service • Production



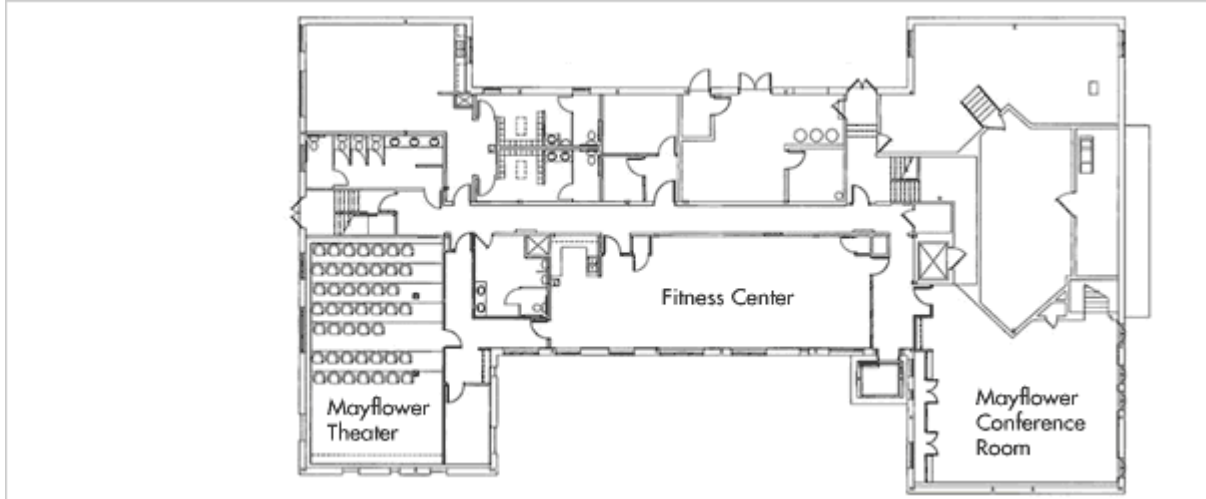
1620 Burnet Avenue • Syracuse, NY 13206

(315)423-2000 • (315)423-0004

www.visualtec.com • contact@visualtec.com

# VISUAL TECHNOLOGIES CORPORATION

## The Mayflower Building



Room Names	Dimensions (L x W x H)	Square Footage	Theater Set Up	Banquet Set Up	Classroom Set Up	Reception Set Up	Exhibit Booths 8 x 10
Mayflower Theater	37 x 24 tiered from 6.5' to 9'	888	50				
Mayflower Conference	34 x 24 x 8	816	75	50	40	50	15

Sales • Rentals • Service • Production



1620 Burnet Avenue • Syracuse, NY 13206

(315)423-2000 • (315)423-0004

www.visualtec.com • contact@visualtec.com